



**PERFECT
SOLUTION MEETS
YOUR NEEDS**

Key East Machinery Industry Co., Ltd.

Your  Needs
ABOUT KEY EAST

Key East Machinery Industry Co., Ltd.

MN-30120



● Powerful Headstock

Thanks to the high precision taper roller bearing installation, spindle works at high rigidity and accuracy. The perfect speed transmission obtained from the spindle and the built-in precision gears. All gears and bearings are lubricated automatically.

A

● Big Spindle Bore

15", 380mm, spindle bore is designed for processing the big oil country pipe.

B

● 3V Way+ 1 Flat Way Slides

On the bed, 3-V way + 1 flat way sliders are fixed. They're well hardened and ground by the high class finish. In addition to the V-Shapes on top, the V slanted shapes are on both two ends, they firm the lathe body perfectly.

C

● Robust Structure

The robust structure comes from the tough ribbed frame; the tough ribbed frame comes from the high quality cast. The cast is made by the number one Meehanite licensee in Taiwan; the higher cost offers the cast in good finish. The great completed structure gives the good result of ensuring heavy-duty work of daily long hours at shop, making operator work happily and willingly.

D

About Key East

In more than forty one years, Key East has been building the high quality durable flat-bed lathe for customers. Key East team not only has the excellent design ability but also insists on the perfect condition of the machine to be shipped; each machine to be shipped by Key East must be in perfect condition finally.

Customized machine inquiry specific to shop job is welcome! Key East, the capable designer makes customer happy by the supreme innovative design ability for all industries around the world at the most affordable price.

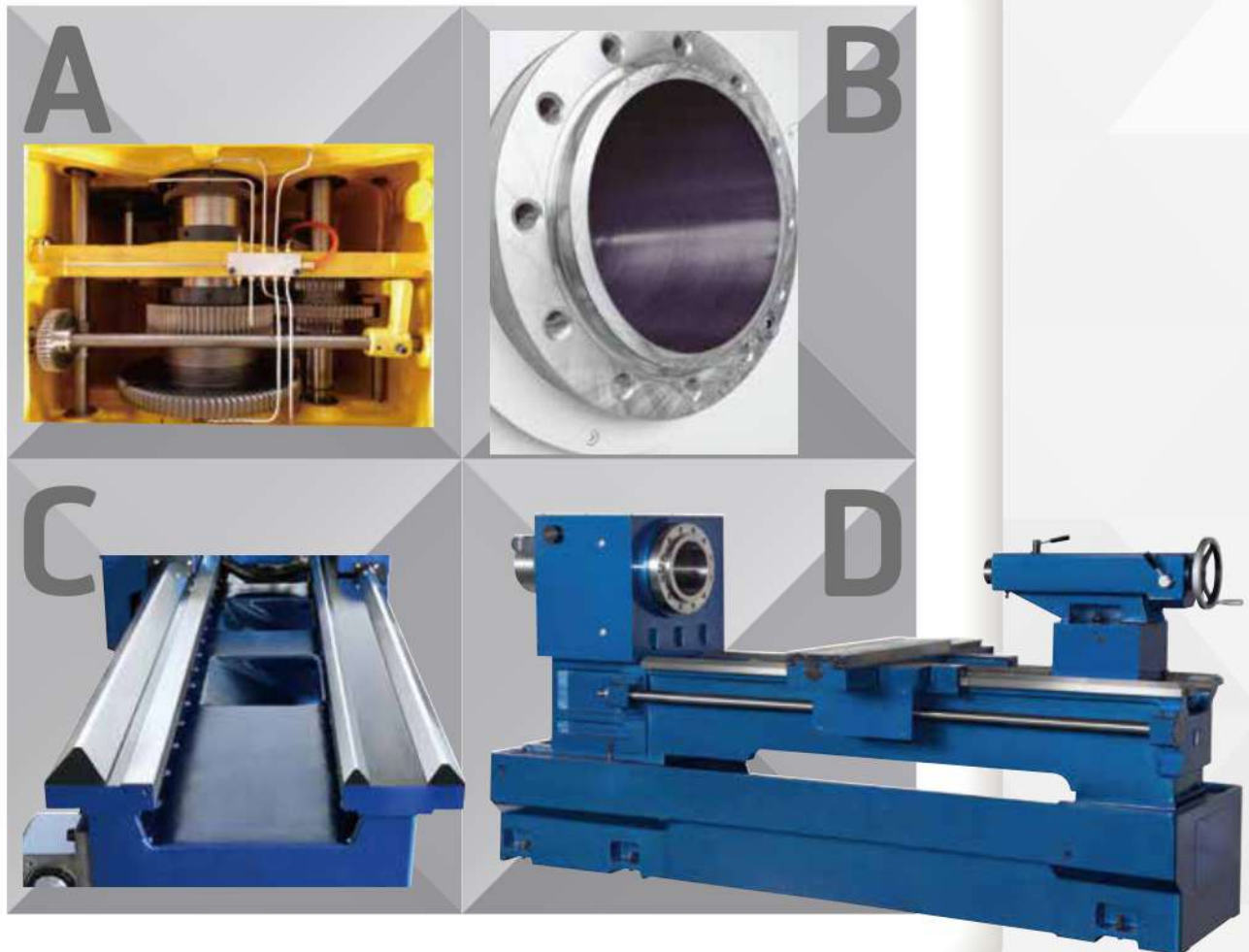
Key East provides dealers with good service of before and after sales. Dealers always receive the in time and immediate full support from Key East.

Long term business running like the long run river is Key East milestone. Key East does goodness for all the users and dealers.

The great solution performer can be found is in Key East!



SN-2040



MN-3060

Your  Needs
PROFESSION

Key East Machinery Industry Co., Ltd.

Precision Spindle

The alloy steel gear is manufactured through the procedures of hot treatment, well hardened and ground. The spindle is finished by the high precision ground and the G1 class balance adjustment.

One Piece Finished Casting (BN GN SERIES)

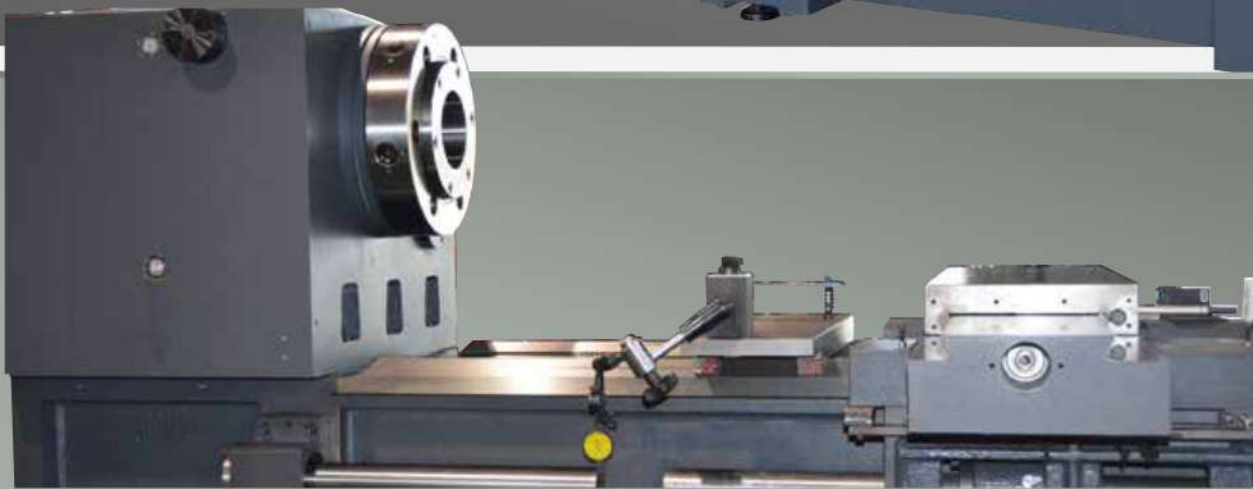
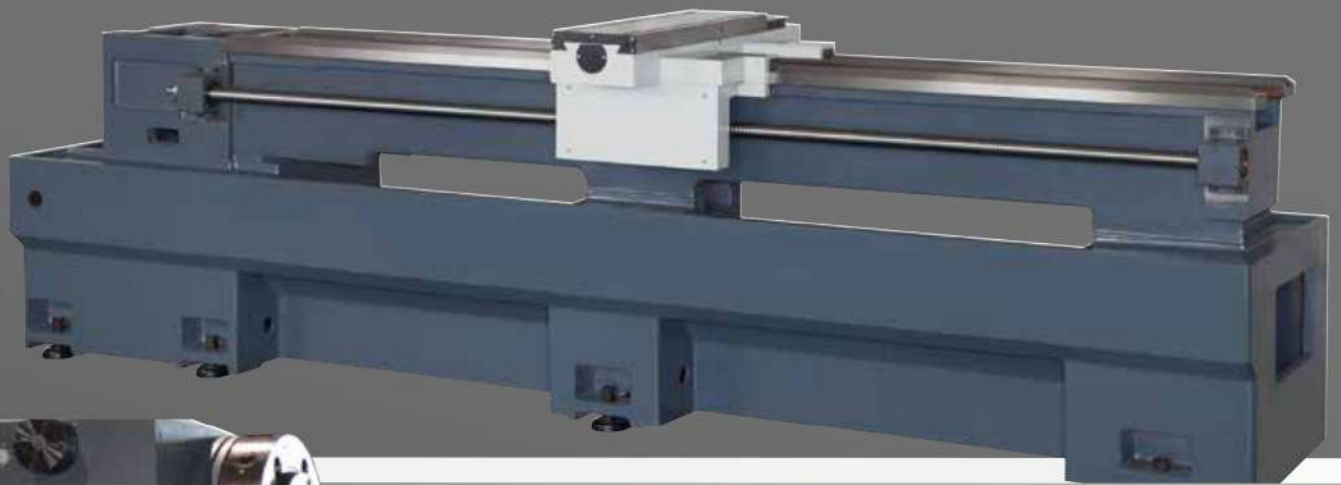
The one piece finished casting is bed with base. It's stronger in structure and brings the lifelong usage of high rigidity and accuracy without deforming.

Building Line

Step by step, building engineer builds machine carefully and slowly. Without getting the required accuracy, ordered by company, engineer is not allowed to work forward.

High Class Hand Scraping

By the high class work of hand scraping on the contact faces of slides, machine obtains long time durability at high precision and accuracy.



STANDARD ACCESSORIES

- 1) CNC controller
- 2) Spindle + X / Z servo motors
- 3) Manual tailstock
- 4) Half splash guard
- 5) Pendant operation box
- 6) Manual pulse generator
- 7) RS232 interface
- 8) Electric cabinet with fans
- 9) Work light & alarm light
- 10) Standard tool box & operation manual
- 11) Leveling pads & screws
- 12) Lubrication system
- 13) Coolant equipment
- 14) Steady rest (roller type)
- 15) Dead center
- 16) Mechanical one year warranty
- 17) Controller two year warranty
- 18) Machine color : Key East standard (RAL 7015/7035)



OPTIONAL ACCESSORIES

- 1) 3-jaw chuck in manual / hydraulic / pneumatic types
- 2) 4-jaw chuck in manual types
- 3) Double chuck
- 4) V8 turret in hydraulic / electric types
- 5) H4 turret in hydraulic / electric types
- 6) Two-speed tailstock / manual rotating tailstock / hydraulic tailstock
- 7) Live center
- 8) Chip conveyor + cart
- 9) Boring attachment
- 10) Mist collector
- 11) Full splash guard
- 12) Headstock oil cooler
- 13) Hydraulic brake for spindle
- 14) Hydraulic steady rest
- 15) Heat exchanger on electric cabinet
- 16) Refrigerator on electric cabinet
- 17) Taiwan made motor + inverter for spindle
- 18) Transformer
- 19) C axis
- 20) Live tooling



GN-50120

Your **KE** Needs

OPTIONAL ACCESSORIES



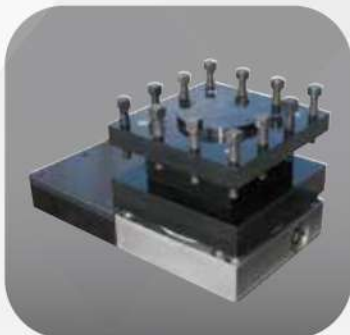
3-Jaw Manual Chuck



4-Jaw Independent Chuck



4-Jaw Hydraulic Chuck



H4 Turret



V8 / V10 Turret



Live Tooling Turret



Hydraulic Spindle Brake



Chip Conveyor



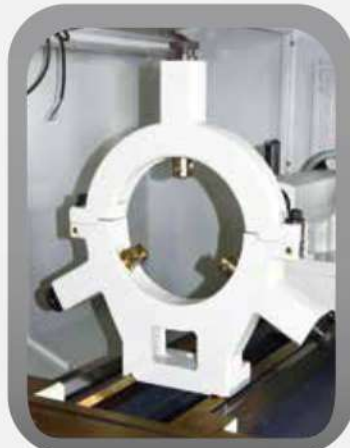
Hydraulic Tailstock



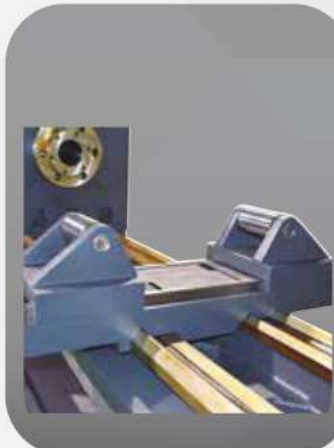
Headstock Oil Cooler



Boring Attachment



Steady Rest



Heavy Duty Steady Rest



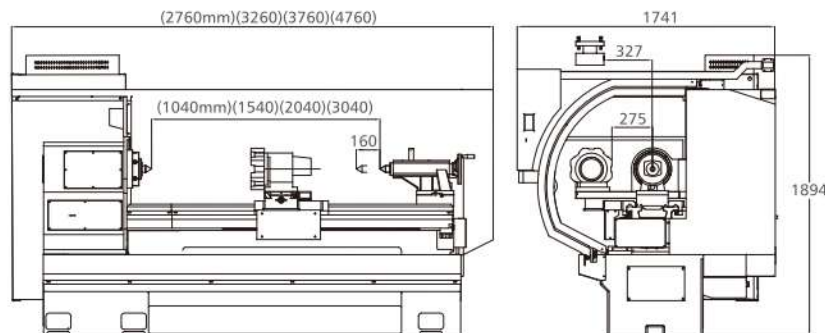
3 Point Follow Rest



Follow Rest

Your  Needs

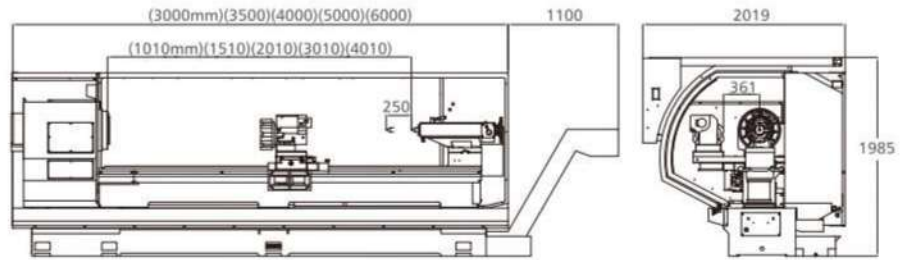
SN series



Model		unit	SN-20		SN-22	
Capacity	Center height	mm (inch)	255(10.04")		280(11.02")	
	Distance between centers	mm (inch)	1000(39"), 1500(59"), 2000(79"), 3000(118")			
	Swing over bed	mm (inch)	510(20.08")		560(22.05")	
	Swing over gap	mm (inch)	710(27.95")		760(29.92")	
	Swing over cross slide	mm (inch)	290(11")		340(13.39")	
	Width of bed	mm (inch)	350(14")			
	Bed way		3 V way + 1 flat way			
		Cross slide width	mm (inch)	220(8.66")		
	Gap width	mm (inch)	*305(12")			
Headstock & main spindle	Spindle bore / nose	mm (inch)	85(3.4") D1-8 / *105(4") D1-11			
	Spindle taper		MT #7			
	Spindle speed	rpm	3.4" bore(30~2000) / *4" bore(30~1500)(auto 3 steps)			
Cross slide (X-axis) & Carriage (Z-axis)	Cross slide travel (X-axis)	mm (inch)	380(15")			
	Longitudinal travel(Z-axis)	mm (inch)	1000(39"), 1500(59"), 2000(79"), 3000(118")			
	AC servo motor (X-axis)	kw	1			
	AC servo motor (Z-axis)	kw	1			
	Dia of ball screw (X-axis)	mm	Ø25xP5xC3			
	Dia of ball screw (Z-axis)	mm	Ø40xP10xC5			
	Rapid traverse speed (X-axis)	mm / min	6000			
	Rapid traverse speed (Z-axis)	mm / mm	8000			
Tailstock	Quill taper		MT #5			
	Quill diameter	mm (inch)	Ø75(3")			
	Quill travel	mm (inch)	160(6")			
Turret / toolpost	Tool station		*horizontal type 4T		*vertical type 8T / *vertical type 10T	
	Tool shank	mm	20			
Motor	Main spindle	kw	11/*15 [*15hp(*15hp inverter)]			
	Headstock speed auto change x 1	w	25			
	Lube system pump	w	22			
	Hydraulic oil pump	hp	2			
	Coolant pump	hp	1/8(90w)			
Accuracy	Positioning	mm	+0.01 / 300			
	Repeatability	mm	+0.005			
	Spindle run-out	mm	+0.01			
Tank	Hydraulic tank	l	60			
Capacity	Coolant tank	l	66			
Controller	Controller	Brand	Syntec / Simens / Fagor / Fanuc / Mitsubishi			
	Controllable	axis	2			
Weight	Net / Gross	kg (lb)	2800(6160) /	3100(6820) /	3400(7480) /	4000(8800) /
			3000(6600)	3350(7370)	3700(8140)	4400(9680)
Dimensions	Floor space (full guard)	mm (inch)	2850x1650x1950	3350x1650x1950	3850x1650x1950	4850x1650x1950
	L x W x H		(112"x65"x77")	(132"x65"x77")	(152"x65"x77")	(191"x65"x77")
	Packing size (full guard)	mm (inch)	3100x2200x2200	3600x2200x2200	4100x2200x2200	5100x2200x2200
	L x W x H		(122"x87"x87")	(142"x87"x87")	(161"x87"x87")	(200"x87"x87")

* Design and specs are subject to change without notice.
* is option.

MN series



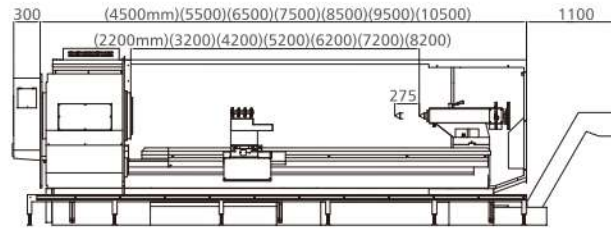
Model		unit	MN-26			MN-30	
Capacity	Center height	mm (inch)	330(12.99")			380(14.96")	
	Distance between centers	mm (inch)	1080(40"), 1580(60"), 2080(80"), 3080(120"), 4080(160"), 5080(200")				
	Swing over bed	mm (inch)	660(25.98")			760(29.92")	
	Swing over gap	mm (inch)	940(37.01")			1040(40.95")	
	Swing over cross slide	mm (inch)	440(17")			540(21")	
	Width of bed	mm (inch)				450(17")	
	Bed way		3V + 1 Flat way				
	Cross slide width	mm (inch)	250(10")				
	Gap width	mm (inch)	*350(13.78")				
Headstock & main spindle	Spindle bore / nose	mm (inch)	105(4")D1-11 / *155(6")A2-11 / *180(7")A2-15 / *230(9")A2-15				
	Spindle taper		MT #7				
	Spindle speed	rpm	4" bore(20-1500rpm) / *6" bore(20-1000rpm) / *7" bore(20-1000rpm) / *9" bore(20-800rpm)(auto 3 steps)				
Cross slide (X-axis) & Carriage (Z-axis)	Cross slide travel (X-axis)	mm (inch)	405(16")				
	Longitudinal travel(Z-axis)	mm (inch)	970(38"), 1470(57"), 1970(77"), 2970(117"), 3970(156")				
	AC servo motor (X-axis)	kw	1				
	AC servo motor (Z-axis)	kw	2				
	Dia of ball screw (X-axis)	mm	Ø32xP5xC3				
	Dia of ball screw (Z-axis)	mm	Ø50xP10xC5				
	Rapid traverse speed (X-axis)	mm / min	6000				
Rapid traverse speed (Z-axis)	mm / mm	8000					
Tailstock	Quill taper		MT #5				
	Quill diameter	mm (inch)	Ø105(4") / * rotation Ø165(6.5")				
	Quill travel	mm (inch)	250(10")				
Turret / toolpost	Tool station		*horizontal type 4T		*vertical type 8T / *vertical type 10T		
	Tool shank	mm	25				
Motor	Main spindle	kw	11 / *15 [*20hp(20hp inverter) / *30hp(30hp inverter)]				
	Headstock speed auto change x 1	w	25				
	Lube system pump	w	22				
	Hydraulic oil pump	hp	2				
	Coolant pump	hp	1/8(90)				
Accuracy	Positioning	mm	+0.01 / 300				
	Repeatability	mm	+0.005				
	Spindle run-out	mm	+0.01				
Tank	Hydraulic tank	l	60				
Capacity	Coolant tank	l	37	93	93	112	112
Controller	Controller	Brand	Simens / Fagor / Fanuc / Mitsubishi				
	Controllable	axis	2				
Weight	Net / Gross	kg (lb)	3700(8140) /	4000(8800) /	4300(9460) /	5000(11000) /	5700(12540) /
			3900(8580)	4250(9350)	4650(10230)	5450(11990)	6250(13750)
Dimensions	Floor space (full guard)	mm (inch)	3200x2000x2000	3700x2000x2000	4200x2000x2000	5200x2000x2000	6200x2000x2000
	L x W x H		(114"x79"x79")	(134"x79"x9")	(154"x79"x79")	(193"x79"x79")	(232"x79"x79")
	Packing size (full guard)	mm (inch)	3500x2200x2200	4000x2200x2200	4500x2200x2200	5500x2200x2200	6500x2200x2200
	L x W x H		(138"x87"x87")	(158"x87"x87")	(177"x87"x87")	(217"x87"x87")	(256"x87"x87")

* Design and specs are subject to change without notice.

* is option.

Your  Needs

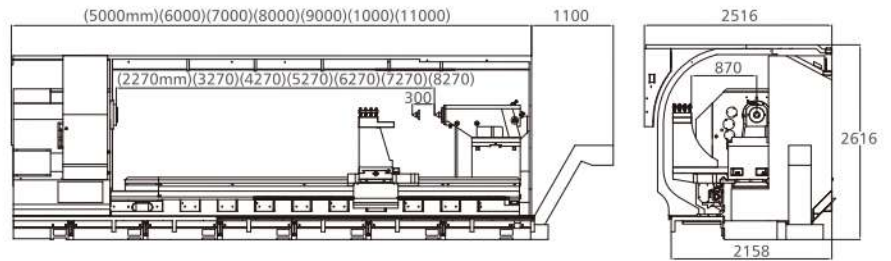
BN series



Model		unit	BN-32	BN-40	BN-48	
Capacity	Center height	mm (inch)	400(15.75")	*500(19.68")	*600(23.62")	
	Distance between centers	mm (inch)	2200(86"), 3200(126"), 4200(165"), 5200(205")			
	Swing over bed	mm (inch)	800(31.5")	1000(39")	1200(47")	
	Swing over gap	mm (inch)	1080(42.52")	1280(50.4")	1480(58.3")	
	Swing over cross slide	mm (inch)	510(20")	710(28")	*910(36")	
	Width of bed	mm (inch)	560(22")			
	Bed way		3V + I Flat Way			
	Cross slide width	mm (inch)	300(12")			
	Gap width	mm (inch)	*600(24")			
Headstock & main spindle	Spindle bore / nose	mm (inch)	155(6") A2-11 / *250(10") A2-15 / *305(12") A2-20 / *380(15") A2-20			
	Spindle speed	rpm	6" bore(6-800rpm) / *10" bore(4-600rpm) / *12" bore(4-400rpm) / *15" bore(4-300rpm)(auto 4 steps)			
Cross slide (X-axis) & Carriage (Z-axis)	Cross slide travel (X-axis)	mm (inch)	550(22")			
	Longitudinal travel(Z-axis)	mm (inch)	2000(80"), 3000(120"), 4000(160"), 5000(200")			
	AC servo motor (X-axis)	kw	3 Fanuc / 3.3 Simens / 14.8 Nm Fagor			
	AC servo motor (Z-axis)	kw	4 Fanuc / 4.4 Simens / 27.3 Nm Fagor			
	Dia of ball screw (X-axis)	mm	Ø40xP5xC3			
	Dia of ball screw (Z-axis)	mm	Ø63xP10xC5 / *Ø80xP12xC5(6000, 7000, 8000)			
	Rapid traverse speed (X-axis)	mm / min	6000			
Rapid traverse speed (Z-axis)	mm / mm	8000				
Tailstock	Quill taper		MT #6			
	Quill diameter	mm (inch)	Ø125(5") / *rotation 165(6.5")			
	Quill travel	mm (inch)	275(11")			
Turret / toolpost	Tool station		*horizontal type 4T / *horizontal type 6T	*vertical type 8T / *vertical type 10T		
	Tool shank	mm	32			
Motor	Main spindle	kw	22 / *30 [*30hp(30hp inverter) / *40hp(40hp inverter)]			
	Headstock lube pump	hp	1 / 4			
	Headstock speed auto change x 2	w	60			
	Lube system pump	w	22			
	Hydraulic oil pump	hp	2			
	Coolant pump	hp	1/2			
Accuracy	Positioning	mm	+0.01 / 300			
	Repeatability	mm	+0.005			
	Spindle run-out	mm	+0.01			
Tank Capacity	Hydraulic tank	l	80			
	Coolant tank	l	203, 275, 332, 390			
Controller	Controller	brand	Simens / Fagor / Fanuc / Mitsubishi			
	Controllable	axis	2			
Weight	Net / Gross	kg (lb)	7200(15840) / 7700(16940)	8000(17600) / 8600(18920)	8800(19360) / 9500(20900)	9600(21120) / 10400(22880)
Dimensions	Floor space (full guard)	mm (inch)	4350x2350x2000 (175"x93"x79")	5350x2350x2000 (136"x93"x79")	6350x2350x2000 (246"x93"x79")	7350x2350x2000 (285"x93"x79")
	L x W x H					
	Packing size (full guard)	mm (inch)	4550x2200x2200 (189"x87"x87")	5550x2200x2200 (228"x87"x87")	6550x2200x2200 (268"x87"x87")	7550x2200x2200 (307"x87"x87")
	L x W x H					

* Design and specs are subject to change without notice.
 * is option.
 * Distance between centers 6000 7000 8000 are available.

GN series



Model		unit	GN-40	GN-50	GN-60	GN-70	
Capacity	Center height	mm (inch)	500(19.69")	625(24.61")	750(29.53")	875(34.45")	
	Distance between centers	mm (inch)	2000(79"), 3000(118"), 4000(158"), 5000(197"), 6000(236")				
	Swing over bed	mm (inch)	1000(39.37")	1250(49.21")	1500(59.06")	1750(68.90")	
	Swing over gap	mm (inch)	1500(59.06")	1500(59.06")			
	Swing over cross slide	mm (inch)	640(32.68")	890(42.52")	1140(52.36")	1390(62.21")	
	Width of bed	mm (inch)			820(32")		
	Bed way				3V + 1 flat way		
	Cross slide width	mm (inch)			450(17.72")		
	Gap width	mm (inch)			*650(25.6")		
Headstock & main spindle	Spindle bore / nose	mm (inch)	155(6")(A2-11) / *250(10")(A2-15) / *305(12")(A2-20) / *380(15")(A2-20) / *534(21")(A2-28)				
	Spindle speed	rpm	(6" bore) 4-600 / *(10" 12" bore) 4-400 / *(15" 21" bore) 4-300(auto 4 steps)				
Cross slide (X-axis) & Carriage (Z-axis)	Cross slide travel (X-axis)	mm (inch)			750(29.53")		
	Longitudinal travel(Z-axis)	mm (inch)	2000(79"), 3000(118"), 4000(158"), 5000(197"), 6000(236")				
	AC servo motor (X-axis)	kw	3 Fanuc / 3.3 Simens / 14.8 Nm Fagor				
	AC servo motor (Z-axis)	kw	4 Fanuc / 4.4 Simens / 27.3 Nm Fagor				
	Dia of ball screw (X-axis)	mm	Ø40xP5xC3				
	Dia of ball screw (Z-axis)	mm	Ø63xP10xC5 / *Ø80x12xC5(6000,7000,8000)				
	Rapid traverse speed (X-axis)	mm / min	6000				
Rapid traverse speed (Z-axis)	mm / mm	6000					
Tailstock	Quill taper		MT #6				
	Quill diameter	mm (inch)	Ø200(7.87") / *rotation 290(11.42")				
	Quill travel	mm (inch)	300(11.81")				
Turret / toolpost	Tool station		*horizontal type 4T / *horizontal type 6T	*vertical type 8T / *vertical type 10T			
	Tool shank	mm	32, 50			25, 32	
Motor	Main spindle	kw	30 /*37	[*40hp(40hp inverter) / *50hp(50hp inverter)]			
	Headstock lube pump	hp	1 / 4				
	Headstock speed auto change x 2	w	60				
	Lube system pump	w	22				
	Hydraulic oil pump	hp	2				
	Coolant pump	hp	1/2				
Accuracy	Positioning	mm	+0.01 / 300				
	Repeatability	mm	+0.005				
	Spindle run-out	mm	+0.01				
Tank Capacity	Hydraulic tank	l	80				
Controller	Controller		Simens / Fagor / Fanuc / Mitsubishi				
	Controllable		2				
Weight	Net / Gross	kg (lb)	9000(19800)	10000(22000)	11000(24200)	12000(26400)	13000(28600)
Dimensions	Floor space (full guard)	mm (inch)	5000(197")	6000(236")	7000(276")	8000(315")	9000(354")
	L x W x H		x2500(98")	x2500 98")	x2500(98")	x2500(98")	x2500(98")
			x2400(95")	x2400(95")	x2400(95")	x2400(95")	x2400(95")

* Design and specs are subject to change without notice.
 * is option.
 * Distance between centers 7000 8000 are available.



科毅機械工業有限公司

KEY EAST MACHINERY INDUSTRY CO., LTD.

No.683-1, Fengti Road., Wufeng Dist., Taichung City 413, Taiwan

Tel : 886-4-2331-0255 Fax : 886-4-2339-3105

[http:// www.keyeast.com.tw](http://www.keyeast.com.tw)

[http:// keyeast.en.taiwantrade.com](http://keyeast.en.taiwantrade.com)

E-mail : sales@keyeast.com.tw

service@keyeast.com.tw

